

Innovative Strategies for Securing and Simplifying IT Infrastructure Management

Clico Networking Day - Conn@ction

April 03rd, 2025

Klaus Gretencord

Opengear Sales Engineer, EMEA North

Dirk Schuma

Opengear Sales Manager, EMEA North



Our Network Resilience Platform

Lighthouse

Centralized and secure access portal to connected Opengear nodes and other endpoints



Rack mount appliances

For larger deployments
16 – 96 serial port, 24 Ethernet



Small appliances

For edge / branch sites
4 - 8 serial, 4 - 8 Ethernet

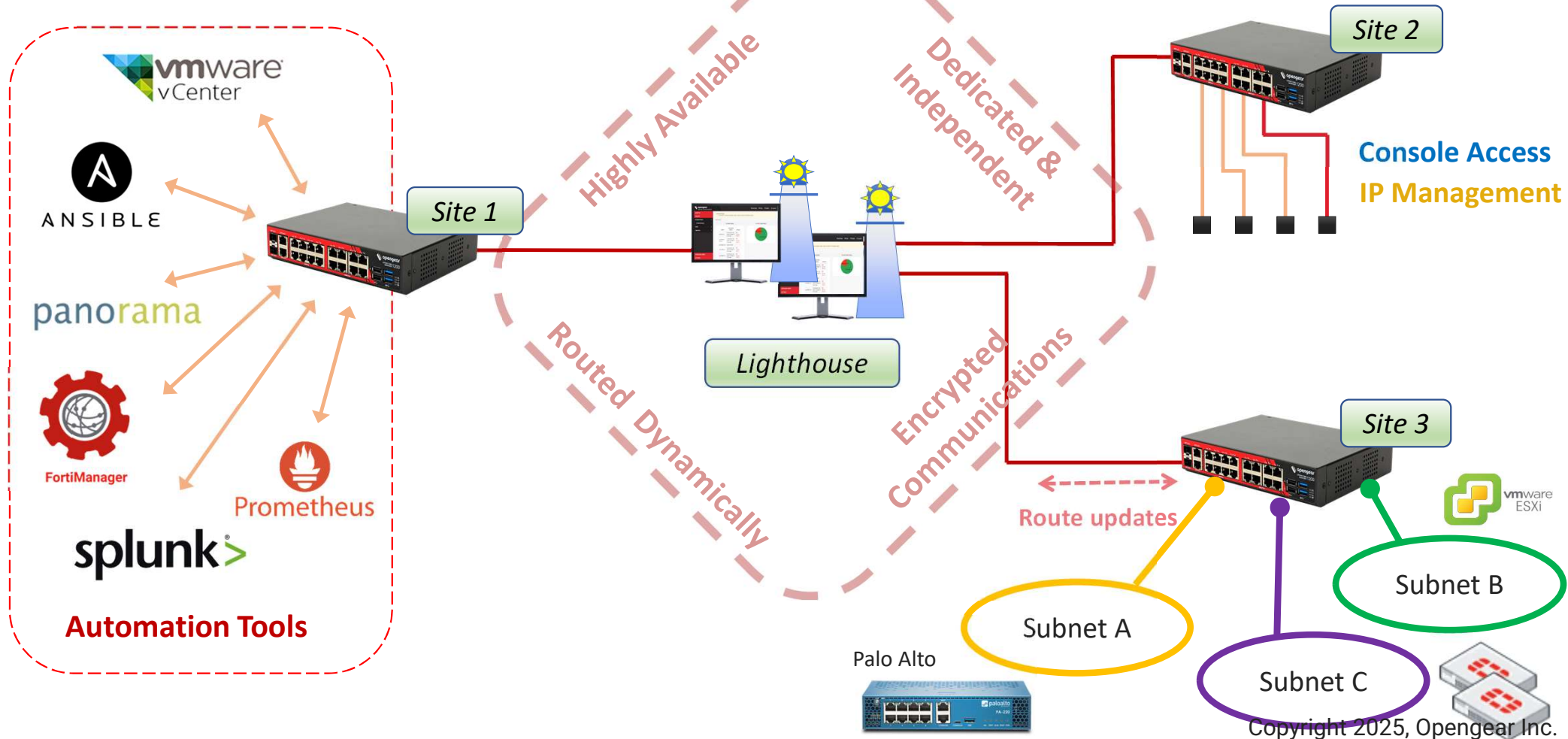
Secured Tunnel to Lighthouse
Secured Failover / Alternative
Tunnel to Lighthouse



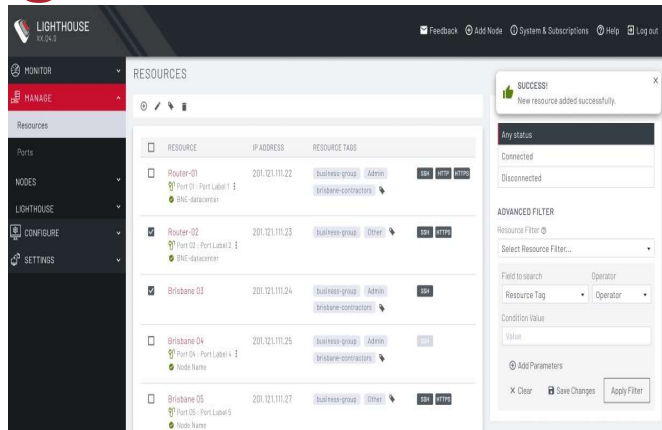
Opengear Solution



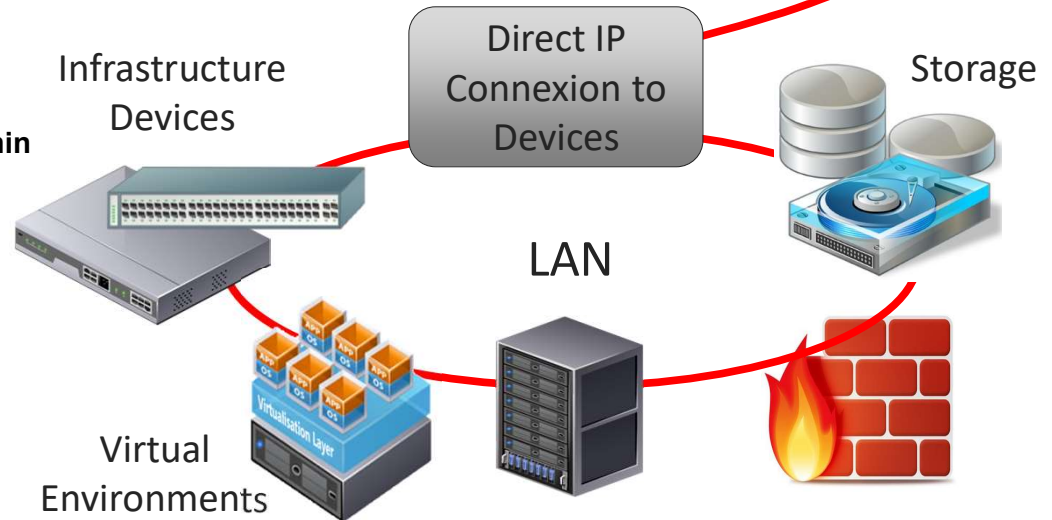
Smart Management Fabric



Lighthouse – Connected Resource Gateway (CRG)



- LAN-to-LAN connectivity
 - Multi-port & Dynamic port support
- Ease of use
 - Lighthouse access redirect browser
- Usability at scale and authorization
- Unlimited concurrent sessions



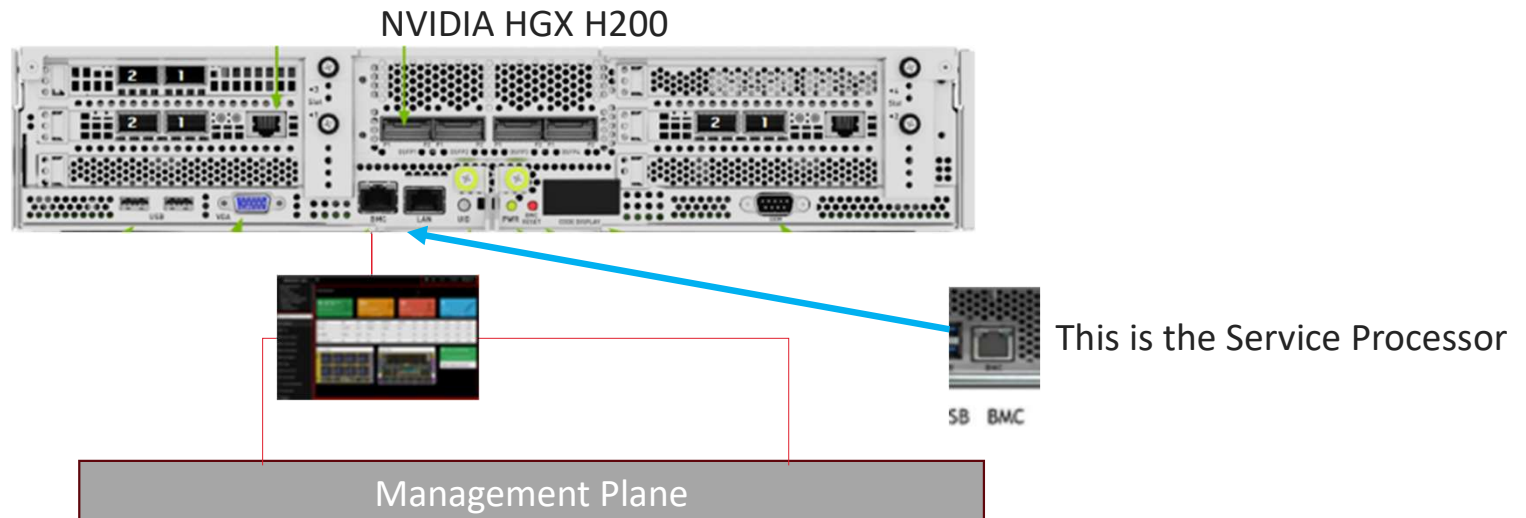


...For Example...

www.opengear.com

© Copyright 2025, Opengear Inc.

NVIDIA uses BMC (baseboard management controllers)



- AI infrastructure management and alerting
- Data center and rack environmental monitoring
- Remotely monitor, manage and troubleshoot
- Dashboards

AI Infrastructure Managers
Data Center Managers



Why do I need Opendgear for Service Processors?

1. Centralized User Access to Service Processors

2. Security

RESOURCES + New Resource

Filter Resources × Any Status Search

<input type="checkbox"/>	RESOURCE NAME ^	ADDRESS	TAGS	IP CONNECTION
<input type="checkbox"/>	cat_1000	192.168.51.3	neteng_users	HTTPS
<input type="checkbox"/>	Dell R480	192.168.51.5	Server_Group	HTTPS
<input type="checkbox"/>	Fortigate 60-D	192.168.51.4	neteng_users	HTTPS
<input type="checkbox"/>	PA200	192.168.51.2	neteng_users	HTTPS

RBAC access to Service Processors with Connected Resource Gateway



Role Based Access Control (RBAC) = who gets to connect to service processor

A User Group called “Server_Admns” is created and access is granted to Server Resources (service processors)

Name
Server_Admns

Description
Access to Service Processors

Group Status
✓ Enabled

ACCESS CONTROL

FILTER TYPE	SUMMARY
By Node Filter	All Nodes
By Port Filter	All Ports
By Resource Filter	Server Group Resources

Users in this group can only see and access Server resources

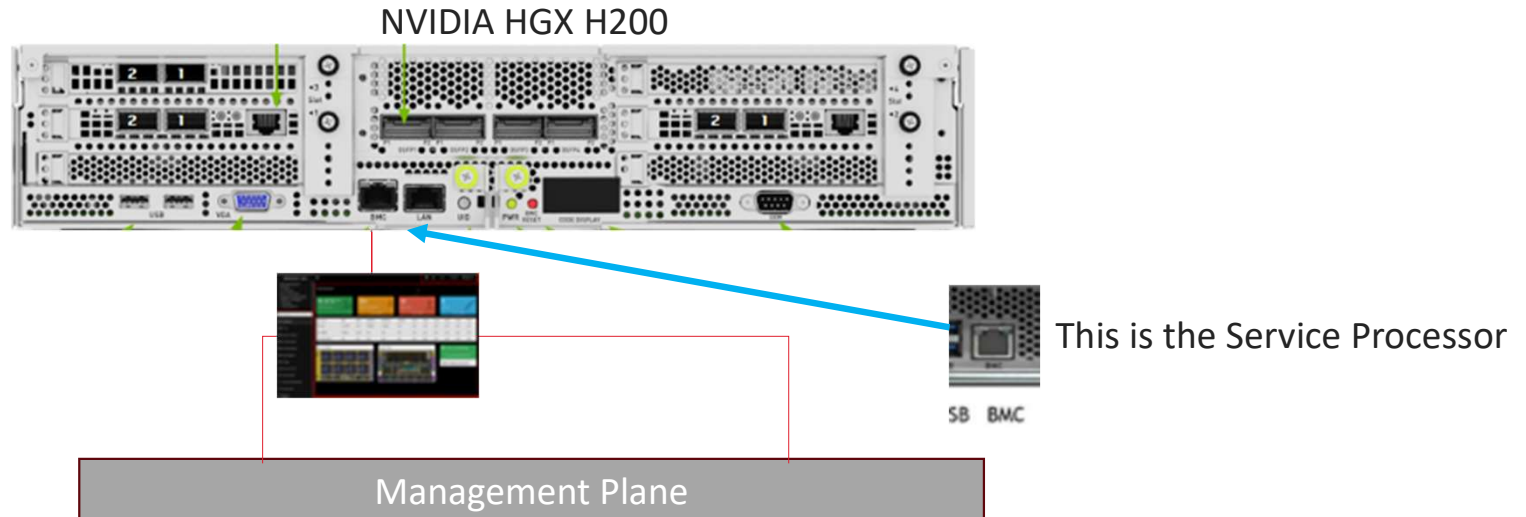
RESOURCES

Filter Resources: Server Group Resources X Any Status

<input type="checkbox"/>	RESOURCE NAME ^	ADDRESS	TAGS
<input type="checkbox"/>	Dell R480	192.168.51.5	Server_Group

< 1 > 1-1 of 1

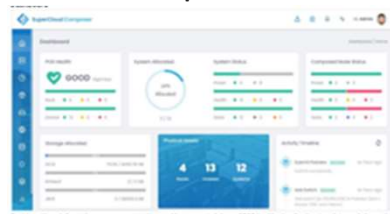
NVIDIA uses BMC (baseboard management controllers)



Grafana - dashboard



Supermicro Composer Orchestration



GB200 BMC/Redfish (API)/IPMI



AI Infrastructure Managers
Data Center Managers



Our Network Resilience Platform

Lighthouse

Centralized and secure access portal to connected Opengear nodes and other endpoints



Rack mount appliances

For larger deployments
16 – 96 serial port, 24 Ethernet



Small appliances

For edge / branch sites
4 - 8 serial, 4 - 8 Ethernet

Secured Tunnel to Lighthouse
Secured Failover / Alternative
Tunnel to Lighthouse





Thank you for your attention!

If there are any questions, please do not
hesitate to contact us.

Klaus.Gretencord@opengear.com

Dirk.schuma@opengear.com

www.opengear.com